

# Mechanized Testing Nuclear



## Tube inspection from OD

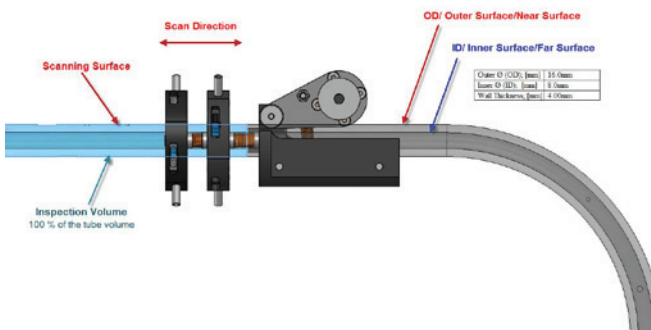
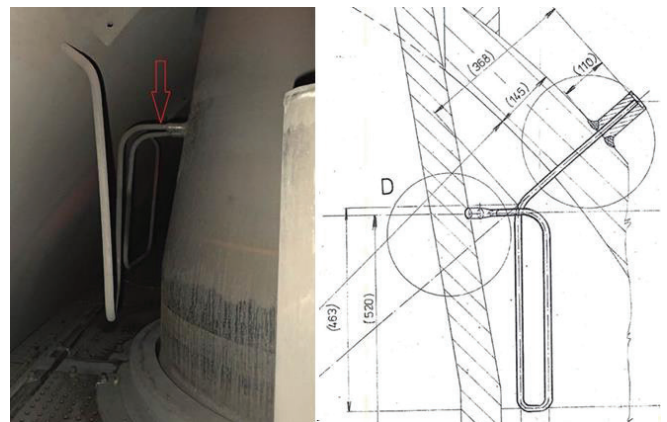
DEKRA Industrial – Mechanized Testing has developed a solution for the inspection of small tubes from the outside by using an encircling Multi-Element Probe for Pulse Echo immersion technique.

The probe can pass bends and the collection of data is made with the encoded movement covering the full thickness of the tube.

### The detection target is:

- > Pits on the outer surface of the pipe with a depth of  $\geq 0,4\text{mm}$  and a diameter  $\geq \varnothing 2\text{mm}$ .
- > Surface Corrosion on the inside surface of the pipe. The residual thickness shall be in the range of 0.7 - 4.0 mm (minimum design thickness 0.7 mm).

The unique design principles allow for a very fast and reliable inspection of a complex geometry.



Tube OD Testing – Ultrasonic immersion technique with encircling probe

DEKRA Industrial AB  
Sweden  
+46 (0)10 - 455 1000  
www.dekra-industrial.se

With reservations for errors and changes.

DEKRA - Global partner for a safe world

DEKRA is working for increased safety in a variety of industries through independent inspection, testing and certification. DEKRA is Europe's leading expert organization with 37 000 employees in 58 countries.